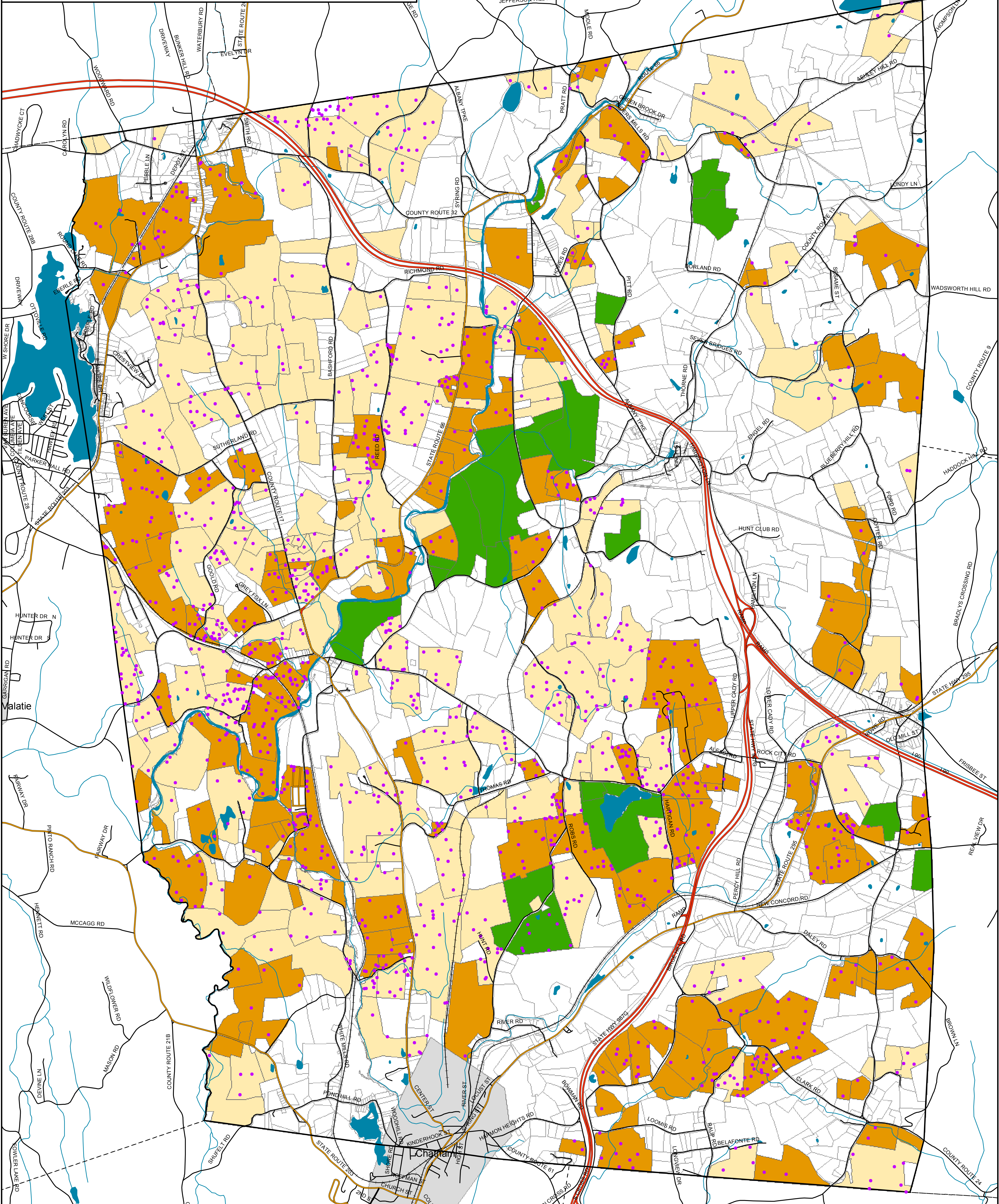


Town of Chatham

Columbia County, NY



Potential New Residences on Priority Farmland from the Comprehensive Plan Buildout

Agriculture Prioritization
Higher Number = Higher Priority

- 5 - 50
- 51 - 88
- Already Protected

Potential New Residences

- 1 Dot = 1

N

Draft Map Date:
5-4-2009

0 0.5 1 2 Miles

Community Planning & Environmental Associates

Nan Stolzenburg, AICP - www.planningbetterplaces.com
152 Stolzenburg Road, Berne, NY 12023
Don Meltz, Planning and GIS - www.donmeltz.com