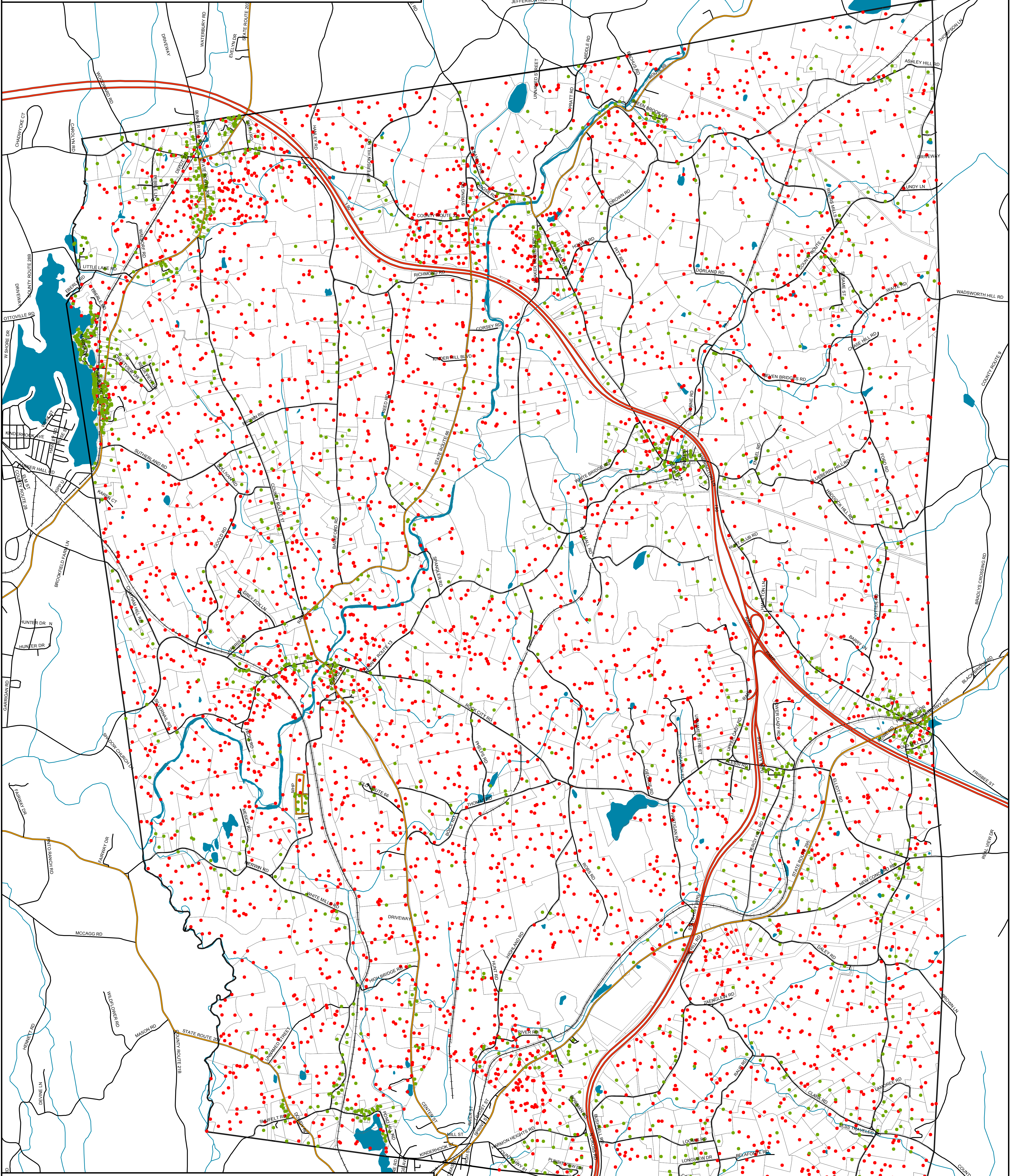


# Town of Chatham

## Columbia County, NY



**Buildout Analysis**  
**(from the Comprehensive Plan using 2004 data)**  
**Potential New Residential Uses**  
**(Without Considering Environmental Constraints)**

- Town Boundary
- Water Features
- Streams
- Roads**
- Primary Highway
- Secondary Road-State or County
- Local Road
- Railroads
- Existing Residences**
- 1 Dot = 1 Residence
- Potential New Residences**
- 1 Dot = 1 New Residence
- Parcel Boundaries

N

Draft Map Date:  
5-4-2009

0      0.5      1 Miles

**Community Planning &  
Environmental Associates**

Nan Stolzenburg, AICP - [www.planningbetterplaces.com](http://www.planningbetterplaces.com)  
 152 Stolzenburg Road, Berne, NY 12023  
 Don Meltz, Planning and GIS - [www.donmeltz.com](http://www.donmeltz.com)